

### Caution

- Direct-acting valves are ideally suited to operate at any angle.
- Voltage drop range is within  $\pm 10\%$ .
- Pressure of voltage DC is 70% of voltage AC only.
- Fluid temp.  $-10 \sim +80^\circ\text{C}$  (Naphtha  $120^\circ\text{C}$ )

### Not for fluid of

- Liquid when heat, solid when cool.
- Corrosive fluid.
- Viscosity over 50 cst.

### Dimensions

Model	MXBD		
Code Dimension (mm)	8A/B/C	10A/B	12A
A	36	50	55
B	25	25	27
C	67.5	91.3	94.8
D	78	87	87
E	37	37	37
F	58	64.5	64.5
G	15	15	—
H	10.5	11.7	13
I	1/4"	3/8"	1/2"
N.W.(Kg)	0.35	0.50	0.55

### Order example

**MXBD - 8A - N - G - A - AC220 - □**

**MODEL**

**SEAL MAT'L**  
 N: NBR  
 S: Silicon  
 J: EPDM  
 V: Viton

**FLUID**  
 Blank: Water  
 A: Air  
 G: Gas  
 N: Naphtha  
 V: Vacuum

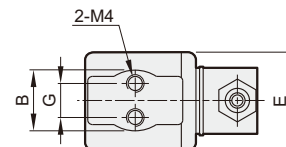
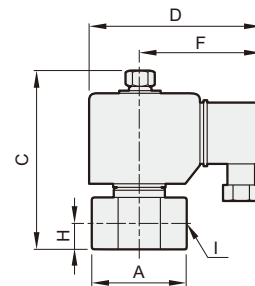
**PORT THREAD**  
 Blank: Rc thread  
 G: G thread  
 NPT: NPT thread

**PIPE SIZE**

PIPE SIZE	CODE
8 1/4"	A, B, C
10 3/8"	A, B
12 1/2"	A

**COIL**  
 G: Square DIN

**VOLTAGE**  
 AC220V(50/60)Hz  
 AC110V(50/60)Hz  
 DC24V



### Specification

Model **MXBD**: Forged brass body, for water, air, gas, naphtha, vacuum.

Code (Port size)	Seal mat'l	Orifice (mm)	Max. operating pressure diff. (0~ bar)					Cv
			Water	Air	Gas	Naphtha	Vacuum	
8A(1/4")	N	2.5	0~10	0~10	0~10	0~7	0~10 <sup>-4</sup> torr	0.23
8B(1/4")	S	3.5	0~7	0~7	0~7	0~5	0~10 <sup>-4</sup> torr	0.42
8C(1/4")		4.5	0~5	0~5	0~5	0~3	0~10 <sup>-4</sup> torr	0.61
10A(3/8")	J	4	0~7	0~7	0~7	0~5	0~10 <sup>-4</sup> torr	0.58
10B(3/8")	V	6	0~3	0~3	0~3	0~2	0~10 <sup>-4</sup> torr	0.79
12A(1/2")		6	0~3	0~3	0~3	0~2	0~10 <sup>-4</sup> torr	0.79